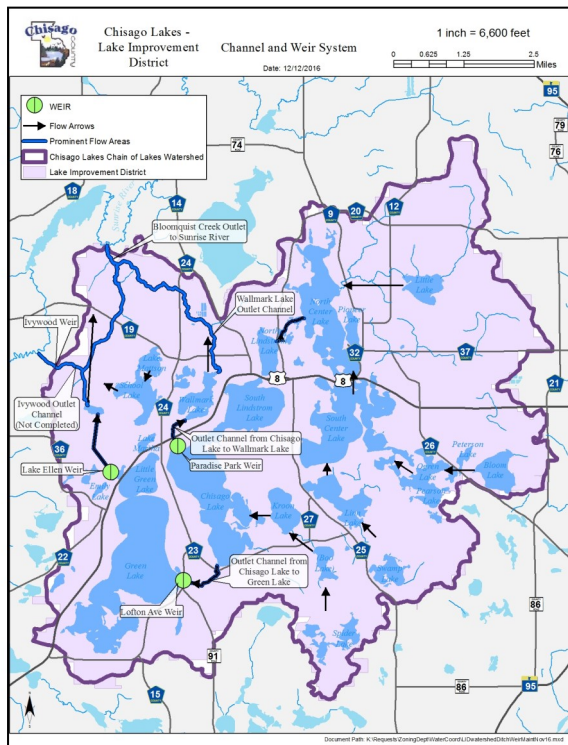


CHANNEL & WEIR OPERATION & MAINTENANCE PLAN



The Channel & Weir-Operations & Maintenance Plan for the Chisago Lakes Outlet Project describes the critical infrastructure, maintenance requirements, and operating rules for continued operation of the system. In 2016, the Chisago Lakes Lake Improvement District (LID) Board authorized an update to the plan to provide further clarification on when and how the structures will be operated along with general updates such as lake level graphs and figures.

Partners:

- Chisago Lakes LID
- Emmons & Olivier Resources, Inc.
- Minnesota DNR

Status:

- Plan approved by Chisago County Board of Commissioners July 19, 2017.

The original plan was created in 1987 with the establishment of the channel and weir system. In 2005, the plan was updated to include design modifications to the Lofton Ave Weir along with other general updates. This is the third update to the plan. Multiple meetings were held with the LID Board Subcommittee and the Minnesota Department of Natural Resources (DNR). The plan has been updated and restructured based on the guidance from these meetings. On December 5th, 2016 the LID Board approved the draft plan. The plan underwent a 30-day review at the Minnesota DNR. After review by the DNR, the plan went to the Chisago County Board of Commissioners and was approved on July 29, 2017.

