

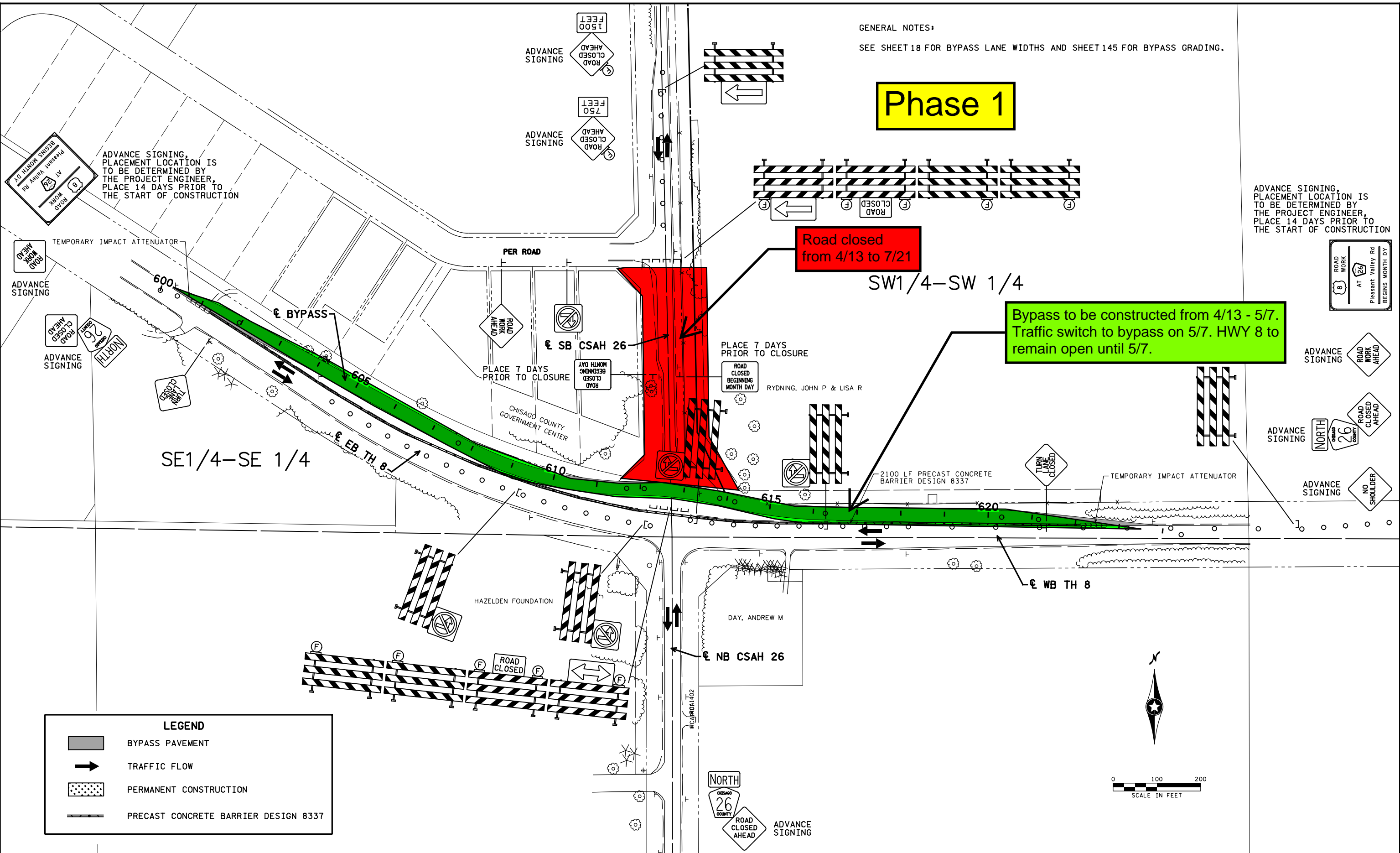
GENERAL NOTES:

SEE SHEET 18 FOR BYPASS LANE WIDTHS AND SHEET 145 FOR BYPASS GRADING.

Phase 1

Road closed from 4/13 to 7/21

Bypass to be constructed from 4/13 - 5/7. Traffic switch to bypass on 5/7. HWY 8 to remain open until 5/7.



ADVANCE SIGNING, PLACEMENT LOCATION IS TO BE DETERMINED BY THE PROJECT ENGINEER, PLACE 14 DAYS PRIOR TO THE START OF CONSTRUCTION

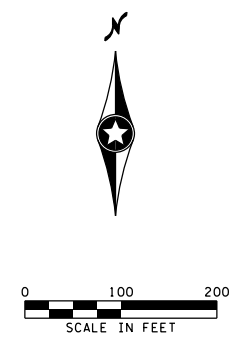
ADVANCE SIGNING, PLACEMENT LOCATION IS TO BE DETERMINED BY THE PROJECT ENGINEER, PLACE 14 DAYS PRIOR TO THE START OF CONSTRUCTION

PLACE 7 DAYS PRIOR TO CLOSURE

PLACE 7 DAYS PRIOR TO CLOSURE

LEGEND

- BYPASS PAVEMENT
- TRAFFIC FLOW
- PERMANENT CONSTRUCTION
- PRECAST CONCRETE BARRIER DESIGN 8337



1:24:13 PM 1/21/2019 P:\Users\jdaul\Documents\Projects\11168\03_Des\gn\Plan\Ina\Plan\11168_tcd02.dgn

NO	DATE	BY	CKD	APPR	REVISION

I hereby certify that this plan, specification, or report was prepared by me or under my direct supervision and that I am a duly Licensed Professional Engineer under the laws of the State of Minnesota.

Print Name: JERAD DAUL

J. Daul

Date: 12/13/2019 License # 56279

STATE PROJECT NO. 1301-127 (TH 8)

STATE PROJECT NO. 013-626-007

DRAWN BY B. NELSON

DESIGNED BY J. DAUL

CHECKED BY B. JOHNSON

COMM. NO. 01811168



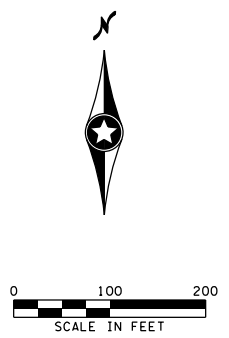
CHISAGO COUNTY

TRAFFIC CONTROL, STAGING, AND DETOUR PLANS

TH 8 AND CSAH 26 ROUNDABOUT

STAGE 1

SHEET 48 OF 159



Phase 2

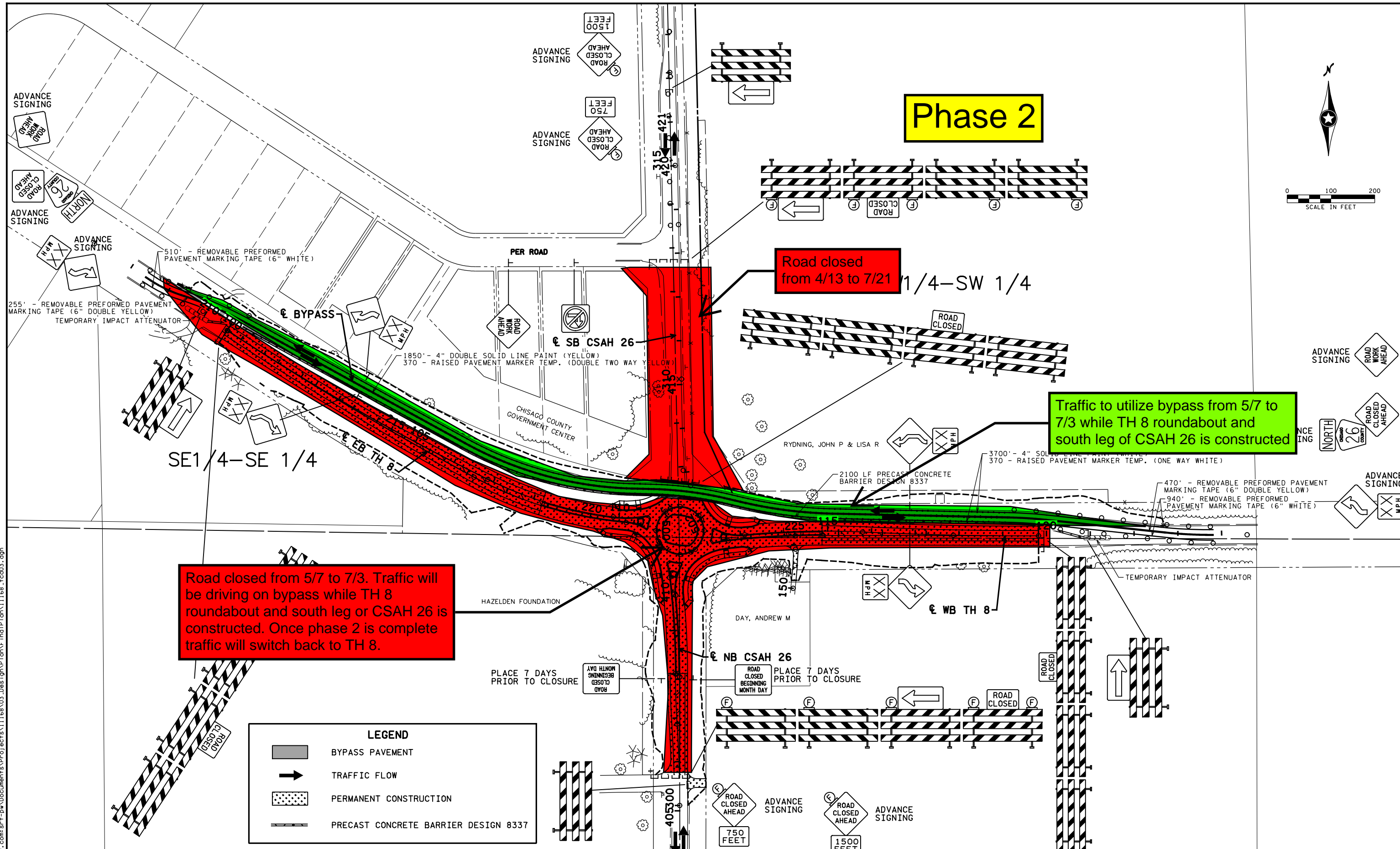
Road closed from 4/13 to 7/21 SW 1/4

Traffic to utilize bypass from 5/7 to 7/3 while TH 8 roundabout and south leg of CSAH 26 is constructed

Road closed from 5/7 to 7/3. Traffic will be driving on bypass while TH 8 roundabout and south leg of CSAH 26 is constructed. Once phase 2 is complete traffic will switch back to TH 8.

LEGEND

- BYPASS PAVEMENT
- TRAFFIC FLOW
- PERMANENT CONSTRUCTION
- PRECAST CONCRETE BARRIER DESIGN 8337



1:24:21 PM
 1/27/2019
 ...Plan\FinalPlan\11168.tcd03.dgn

NO	DATE	BY	CKD	APPR	REVISION

I hereby certify that this plan, specification, or report was prepared by me or under my direct supervision and that I am a duly Licensed Professional Engineer under the laws of the State of Minnesota.

Print Name: JERAD DAUL

J. Daul

Date: 12/13/2019 License # 56279

STATE PROJECT NO. 1301-127 (TH 8)

DESIGNED BY J. DAUL

CHECKED BY B. JOHNSON

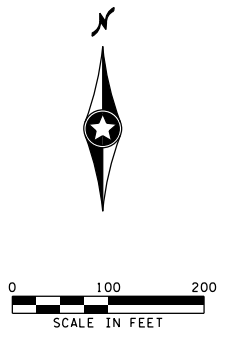
COMM. NO. 01811168



CHISAGO COUNTY

TRAFFIC CONTROL, STAGING, AND DETOUR PLANS
 TH 8 AND CSAH 26 ROUNDABOUT
 STAGE 2

SHEET
 49
 OF
 159

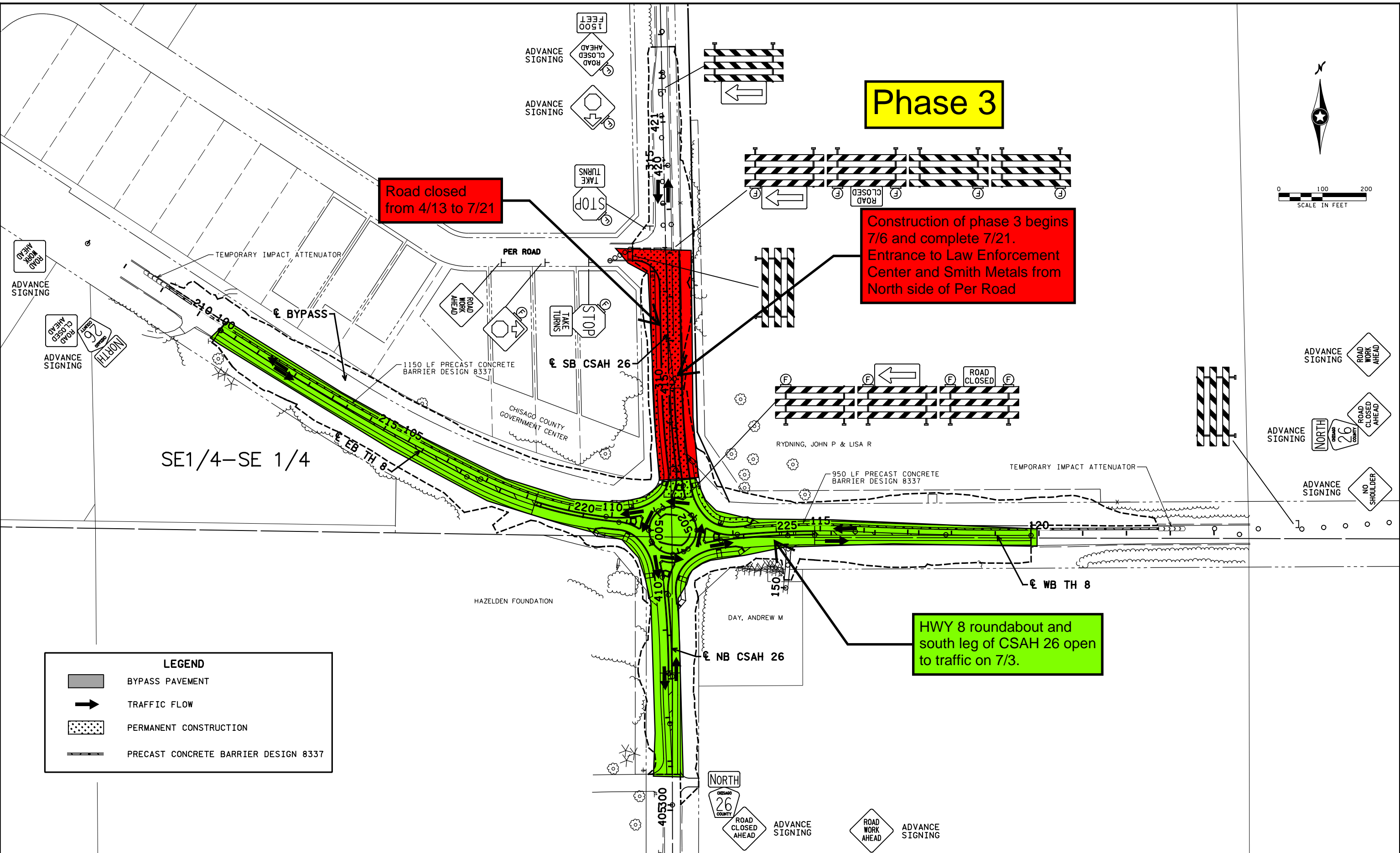


Phase 3

Road closed from 4/13 to 7/21

Construction of phase 3 begins 7/6 and complete 7/21. Entrance to Law Enforcement Center and Smith Metals from North side of Per Road

HWY 8 roundabout and south leg of CSAH 26 open to traffic on 7/3.



LEGEND	
	BYPASS PAVEMENT
	TRAFFIC FLOW
	PERMANENT CONSTRUCTION
	PRECAST CONCRETE BARRIER DESIGN 8337

1:24:28 PM 7/21/2019 P:\Users\jdaul\Documents\Projects\11168\03_Des\gn\Plan\Ina\Plan\11168_tcd04.dgn

NO	DATE	BY	CKD	APPR	REVISION

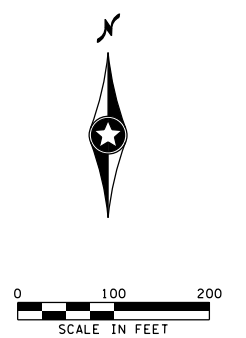
I hereby certify that this plan, specification, or report was prepared by me or under my direct supervision and that I am a duly Licensed Professional Engineer under the laws of the State of Minnesota.
 Print Name: JERAD DAUL
J. Daul
 Date: 12/13/2019 License # 56279

STATE PROJECT NO. 1301-127 (TH 8)
 STATE PROJECT NO. 013-626-007
 DRAWN BY B. NELSON
 DESIGNED BY J. DAUL
 CHECKED BY B. JOHNSON
 COMM. NO. 01811168



CHISAGO COUNTY
 TRAFFIC CONTROL, STAGING, AND DETOUR PLANS
 TH 8 AND CSAH 26 ROUNDABOUT
 STAGE 3

SHEET 50 OF 159



Phase 4

Road closed from 7/21 to 7/31

Construction of phase 4 begins 7/21 and complete 7/31. Entrance to Law Enforcement Center and Smith Metals from South side of Per Road

North leg of CSAH 26 open to traffic on 7/21.

HWY 8 roundabout and south leg of CSAH 26 open to traffic on 7/3.

LEGEND

- BYPASS PAVEMENT
- TRAFFIC FLOW
- PERMANENT CONSTRUCTION
- PRECAST CONCRETE BARRIER DESIGN 8337

1:24:35 PM 7/21/2019 P:\Users\jdaul\Documents\Projects\11168\03_Des\gn\Ina\Final\Ina\Final\11168_tcd05.dgn

NO	DATE	BY	CKD	APPR	REVISION

I hereby certify that this plan, specification, or report was prepared by me or under my direct supervision and that I am a duly Licensed Professional Engineer under the laws of the State of Minnesota.

Print Name: JERAD DAUL

J. Daul

Date: 12/13/2019 License # 56279

STATE PROJECT NO. 1301-127 (TH 8)

DESIGNED BY B. NELSON

CHECKED BY J. DAUL

COMM. NO. 01811168



CHISAGO COUNTY

TRAFFIC CONTROL, STAGING, AND DETOUR PLANS

TH 8 AND CSAH 26 ROUNDABOUT

STAGE 4

SHEET 51 OF 159