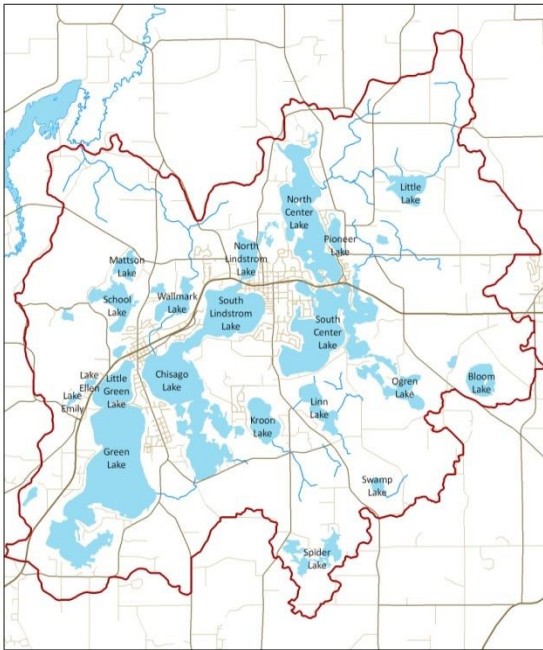


LAKE LEVEL MONITORING PROGRAM



Chisago Lakes Chain of Lakes Watershed
Lakes

Chisago SWCD
Chisago Lakes Chain of
Lakes Watershed TMDL
2011

- The Chisago Lakes are connected via a system of channels and weirs.
- A goal of the Chisago Lakes Lake Improvement District is to maintain the channel and weir system to control water levels during high water events.
- In times of high water, the weirs can be opened to prevent flooding and/or property damage.

- Lake Level Gauges are monitored weekly by county staff during open water season to alert us if lakes are approaching high levels.
- Water levels are reported to DNR for their database, as well as the Chisago County Press for publication each week.
- Linn Lake is currently the closest to its Ordinary High Water (OHW) level, and South Lindstrom and Chisago are currently the lowest – nearly 8 feet below OHW.

Partners:

Lake Improvement District
Department of Natural Resources

Gauge Locations:

- Ivywood Weir
- Kroon
- Linn
- Little
- Little Green/
Green/Ellen
- Lofton Weir
- North Lindstrom
- North/South
Center
- Pioneer
- School
- South Lindstrom
/Chisago
- Spider
- Swamp
- Wallmark

